

KIT SPECIFICATIONS

DRIVER SIDE FRONT ADJ39-K15-1260

Unit Size: 1260mm w x 1950mm h

End panels: Full Panels

No. of shelves: 7

Shelf Depth: 240mm (Row 1), 310mm (Row 2),
410mm (Rows 3-7)

Plastic Bins: None

DRIVER SIDE MID ADJ39-K15-1260

Unit Size: 1260mm w x 1950mm h

End panels: Full Panels

No. of shelves: 7

Shelf Depth: 240mm (Row 1), 310mm (Row 2),
410mm (Rows 3-7)

Plastic Bins: None

DRIVER SIDE REAR ADJ39-K15-1260

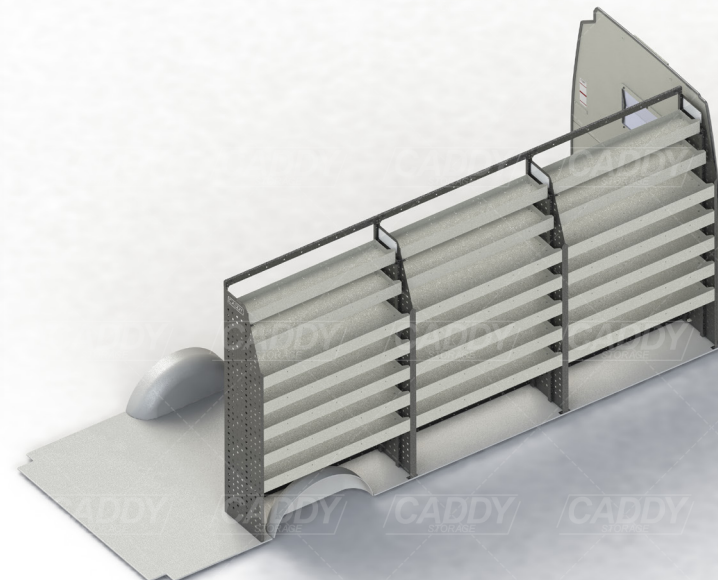
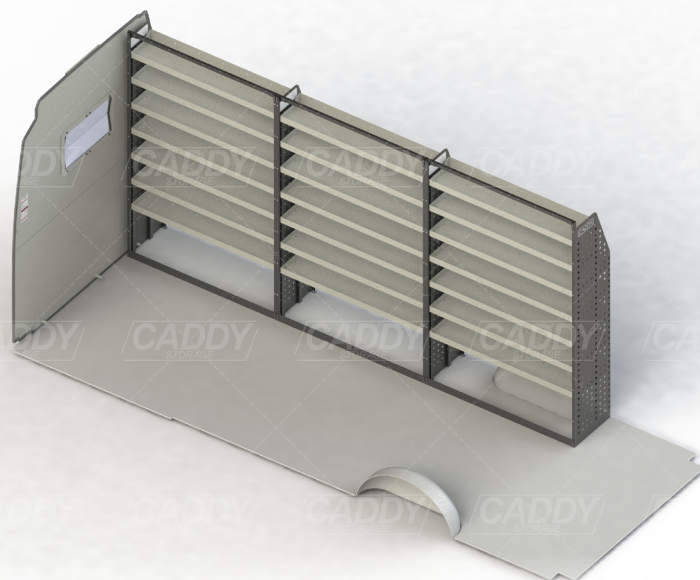
Unit Size: 1260mm w x 1950mm h

End panels: Full Panels

No. of shelves: 7

Shelf Depth: 240mm (Row 1), 310mm (Row 2),
410mm (Rows 3-7)

Plastic Bins: None



DRIVER SIDE FRONT



ADJ39-K15-1260

DRIVER SIDE MID



ADJ39-K15-1260

DRIVER SIDE REAR



ADJ39-K15-1260

Cargo barrier and flooring depicted in images not included in Trade Kit. These accessories are available separately.
Model: Sprinter 313 or 316 or 319CDI / Make: Mercedes / Wheel Base: LWB / Roof: Super High / Year: 10/2013+.
Please check manufacturing plate for the make and model of your vehicle.