

**KIT SPECIFICATIONS**

**ADJ109-B\***

Unit Size: 1080mm w x 1220mm h  
End panels: Heavy Duty Frame with Side Step  
Supports  
No. of shelves: 3 (1 x Cable Shelf, 1 x Bottom Bar)  
Plastic Bins: 10 x PBC 3.0, 10 x PBC 4.0

**ADJ129-B**

Unit Size: 1080mm w x 1220mm h  
End panels: Standard Panels  
No. of shelves: 3 (1 x Cable Shelf, 1 x Bottom Bar)  
Plastic Bins: 10 x PBC 3.0, 10 x PBC 4.0

\*Reversed shelving variant available (ADJ109-BR) designed to provide easy access from the driver side of the vehicle

**ADJ121-B**

Unit Size: 1080mm w x 1220mm h  
End panels: Standard Panels  
No. of shelves: 4  
Plastic Bins: None

**DRIVER SIDE FRONT**



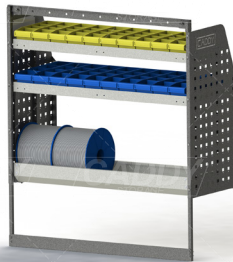
ADJ109-B

**DRIVER SIDE REAR**



ADJ121-B

**PASSENGER SIDE REAR**



ADJ129-B

Cargo barrier and flooring depicted in images not included in Trade Kit. These accessories are available separately.  
Model: Hiace / Make: Toyota / Wheel Base: LWB / Year: 08/2019+. Please check manufacturing plate for the make and model of your vehicle.